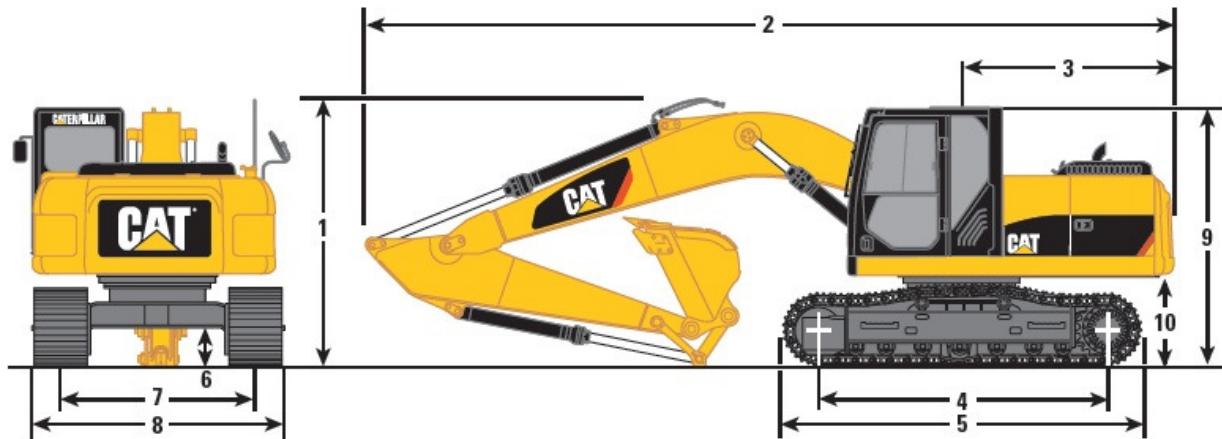




**Address**  
 46 Prince St  
 Danvers, MA 01923

**Phone**  
 978-762-RENT (7368)

## CAT 315 Dimension Sheet



	Boom Options			
	Reach 5.1 m (16'9")	Reach 5.1 m (16'9")	Reach 5.1 m (16'9")	Reach 5.1 m (16'9")
	Stick Options			
	R2.25 m (7'5")	R2.6 m (8'6")	R2.9 m (9'6")	R3.1 m (10'2")
<b>1</b> Shipping Height	2930 mm (9'6")	3030 mm (9'9")	3070 mm (10'1")	3360 mm (11'0")
<b>2</b> Shipping Length	8520 mm (28'0")	8540 mm (28'0")	8560 mm (28'1")	8540 mm (28'0")
<b>3</b> Tail Swing Radius	2500 mm (8'2")	2500 mm (8'2")	2500 mm (8'2")	2500 mm (8'2")
<b>4</b> Length to Center of Idler and Sprocket	3170 mm (10'5")	3170 mm (10'5")	3170 mm (10'5")	3170 mm (10'5")
<b>5</b> Track Length	3970 mm (13'0")	3970 mm (13'0")	3970 mm (13'0")	3970 mm (13'0")
<b>6</b> Ground Clearance	460 mm (1'6")	460 mm (1'6")	460 mm (1'6")	460 mm (1'6")
<b>7</b> Track Gauge	1990 mm (6'6")	1990 mm (6'6")	1990 mm (6'6")	1990 mm (6'6")
<b>8</b> Transport Width				
500 mm (20") shoes (optional)	2490 mm (8'2")	2490 mm (8'2")	2490 mm (8'2")	2490 mm (8'2")
600 mm (24") shoes (standard)	2590 mm (8'6")	2590 mm (8'6")	2590 mm (8'6")	2590 mm (8'6")
700 mm (28") shoes (optional)	2690 mm (8'10")	2690 mm (8'10")	2690 mm (8'10")	2690 mm (8'10")
<b>9</b> Cab Height	2870 mm (9'5")	2870 mm (9'5")	2870 mm (9'5")	2870 mm (9'5")
<b>10</b> Counterweight Clearance	1030 mm (3'5")	1030 mm (3'5")	1030 mm (3'5")	1030 mm (3'5")