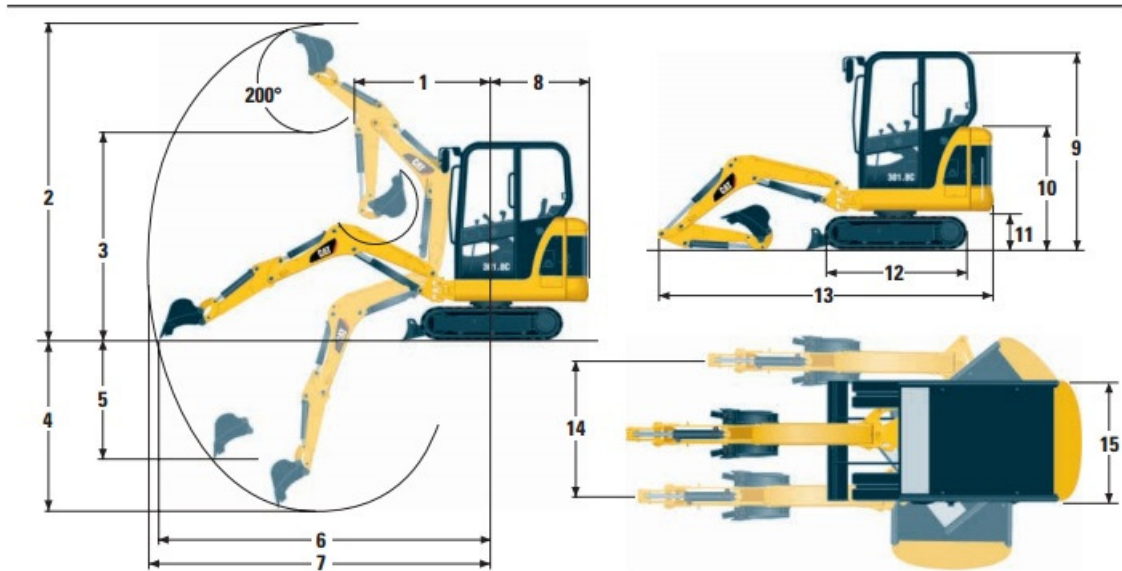




**Address**  
 46 Prince St  
 Danvers, MA 01923

**Phone**  
 978-762-RENT (7368)

## CAT 301 Dimension Sheet



	Standard Stick		Long Stick	
<b>1</b>	1550 mm	5'1"	1560 mm	5'1"
<b>2</b>	3350 mm	11'	3460 mm	11'4"
<b>3</b>	2360 mm	7'9"	2480 mm	8'2"
<b>4</b>	2080 mm	6'10"	2320 mm	7'7"
<b>5</b>	1620 mm	5'4"	1810 mm	5'11"
<b>6</b>	3610 mm	11'10"	3800 mm	12'6"
<b>7</b>	3700 mm	12'2"	3890 mm	12'9"
<b>8</b>	1090 mm	3'7"	1090 mm	3'7"
<b>9</b>	2190 mm	7'2"	2190 mm	7'2"
<b>10</b>	1365 mm	4'6"	1365 mm	4'6"
<b>11</b>	435 mm	1'5"	435 mm	1'5"
<b>12</b>	1575 mm	5'2"	1575 mm	5'2"
<b>13</b>	3695 mm	12'1"	3695 mm	12'1"
<b>14</b>	975 mm	3'2"	975 mm	3'2"
<b>15</b>	980 mm	3'3"	980 mm	3'3"

With tracks level on the ground.

	Standard Undercarriage	301.8C Extended Undercarriage
Track and blade width	980 mm 3'3"	1340 mm 4'5"
Gauge width	750 mm 2'6"	1110 mm 3'8"
Shoe width	230 mm 9"	230 mm 9"

